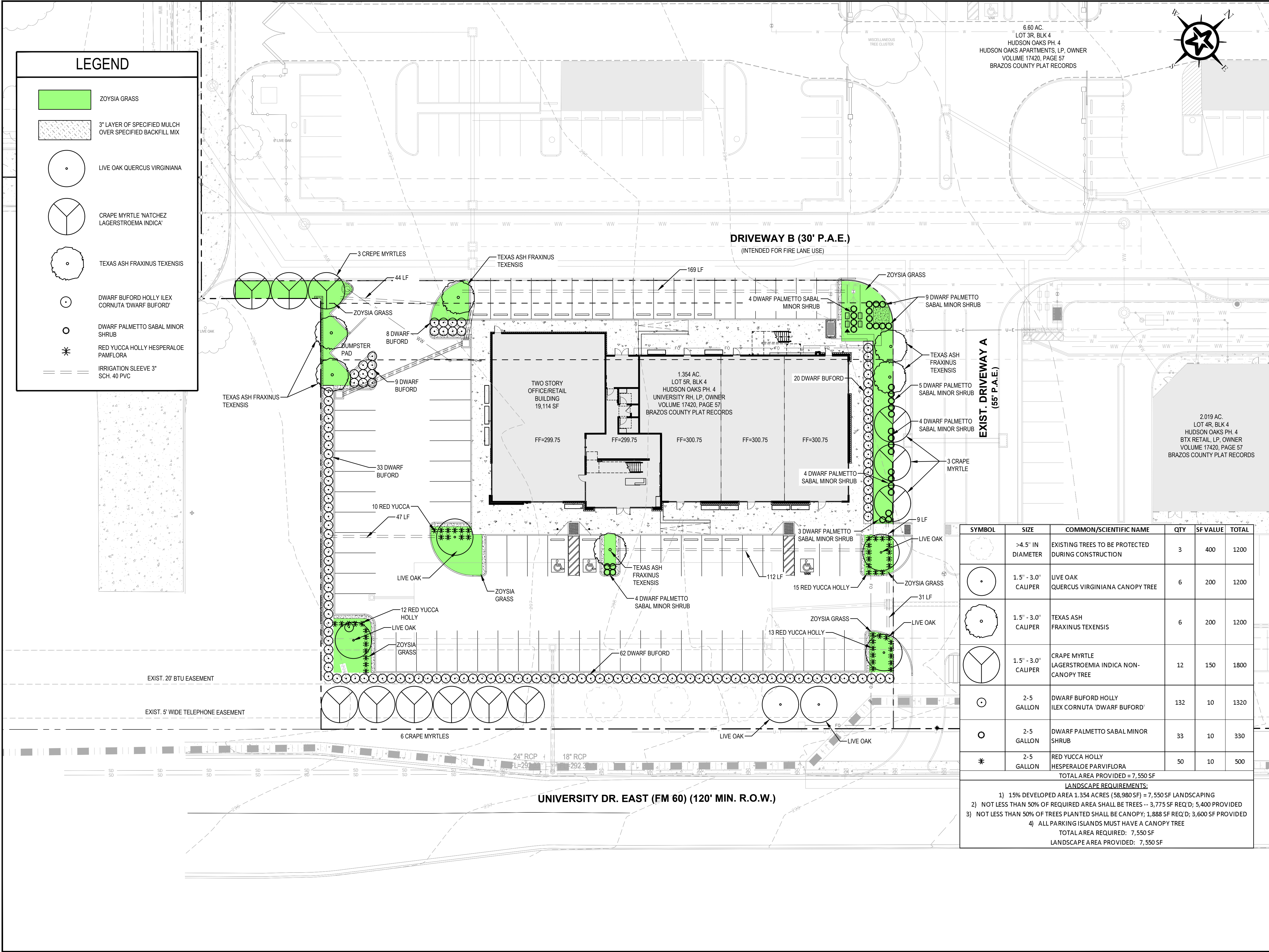


G:\PROJECTS\4-01139\2 ENGINEERING\2.0 CAD\4-01139.09C-LAND.DWG, 1:00 LANDSCAPE PLAN AND ANALYSIS, 11/17/2025 4:16:22 PM, cschneider



GENERAL NOTES

- ALL LANDSCAPING SHALL BE IRRIGATED BY AN UNDERGROUND SPRINKLER SYSTEM.
- TO ENSURE THE GROWTH OF TREES IN END ISLANDS, A MINIMUM 24-INCH SOIL DEPTH AND 250 CUBIC FEET OF APPROXIMATE PLANTING MEDIUM IS REQUIRED PER TREE, WITH TOPSOIL MOUNDED TO A CENTER HEIGHT.
- SCREENING SHRUBS SHALL HAVE A DENSE SHRUBBERY OR BE A HEDGE HAVING YEAR-ROUND FOLIAGE. SHRUBS ARE TO BE PLANTED IN A LANDSCAPE STRIP OF AT LEAST SIX FEET IN WIDTH ARRANGED IN AN ALTERNATING/STAGGERED PATTERN FORMED BY TWO ROWS, TWO FEET APART ON CENTER, EACH OF WHICH IS MADE UP OF SHRUBS THREE FEET ON CENTER. AT THE TIME A REQUEST FOR A CERTIFICATE OF OCCUPANCY IS MADE, SHRUBS AND HEDGES SHALL BE AT LEAST THREE FEET IN HEIGHT.

0 5 10 20 40'
GRAPHIC SCALE

ISSUE	DESCRIPTION	DATE

Walker Partners
engineers | surveyors
T.B.P.E. Registration No. 8053

RNL HOMES
RNL HOMES OFFICE HEADQUARTERS
LANDSCAPE PLAN AND ANALYSIS
PRELIMINARY FOR REVIEW ONLY

THIS DOCUMENT IS RELEASED FOR THE PURPOSE OF INTERIM REVIEW UNDER THE AUTHORITY OF PROFESSIONAL ENGINEER LEE C. SCHROEDER, III #149026 ON THE DATE SHOWN ON THE DATE STAMP. IT IS NOT TO BE USED FOR CONSTRUCTION, BIDDING, OR PERMIT PURPOSES.

DESIGNED BY:	LCS
DRAFTED BY:	LCS/HBS
CHECKED BY:	DPS
REVIEWED BY:	DPS
PROJECT NO:	4-01139.09
DRAWING NO:	L101
SHEET	OF